

AGENDA ITEM EXECUTIVE SUMMARY: Application for Replication Charter

Request

American Charter Schools Foundation d.b.a. South Ridge High School (“Charter Holder”) submitted a replication charter application on October 1, 2019. The Charter Holder seeks to replicate South Ridge High School, the Replication Model School, for the purpose of operating a new school in San Tan Valley. The proposed school will be named Ridgeview College Preparatory High School and will serve students in grades 9-12, with a targeted start date of August 3, 2020.

This Charter Holder was before the Board for this application in November of 2019. The Charter Holder has asked that the Board reconsider the request with additional data provided.

Three Year Plan

	FY 2021	FY 2022	FY 2023
Grade Levels	9-11	9-12	9-12
Enrollment	250	375	455

Profile

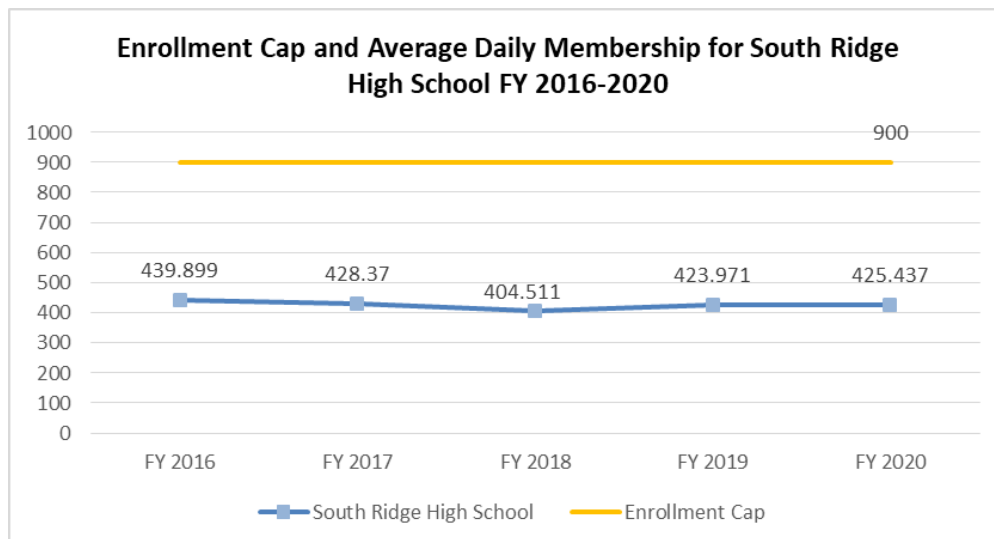
The Charter Holder was granted a renewal charter in 2017.

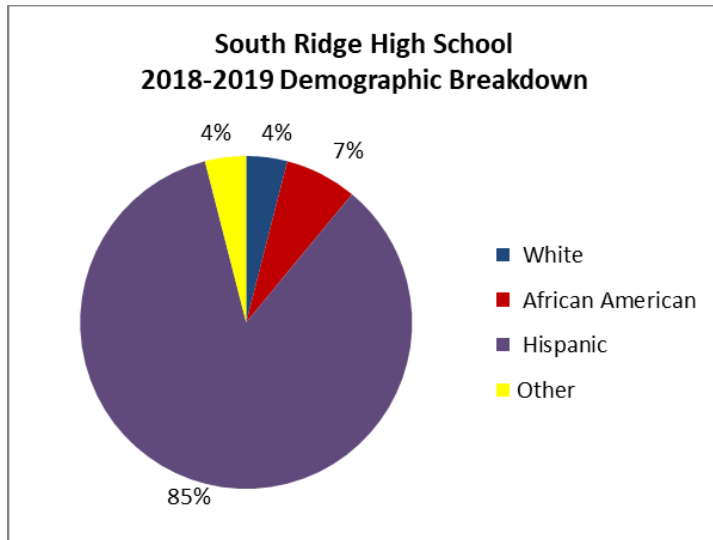
Governance

Corporate Board Members
Gina Conflitti
Theodore Frederick III
John Matthews Jr.
Matthew Proctor Jr.

Enrollment and Demographic Data

100th Day Average Daily Membership for FY 2016–FY 2019, and FY 2020 ADM as of November 7, 2019.





2018-2019 Subgroup Data South Ridge High School	
Free and Reduced Lunch	90%
English Language Learners	5%
Special Education	5%

Replication Model School Profile

School Name	South Ridge High School		
Date Open	July 2006		
Location	Phoenix		
Grades Served	9-12		
FY 2019 Letter Grade	B		
	FY 17	FY 18	FY 19
ELA AzMERIT (42% ⁺)	30%	31%	26%
Math AzMERIT (42% ⁺)	29%	34%	43%
Science AIMS (52% ⁺)	19%	16%	16%

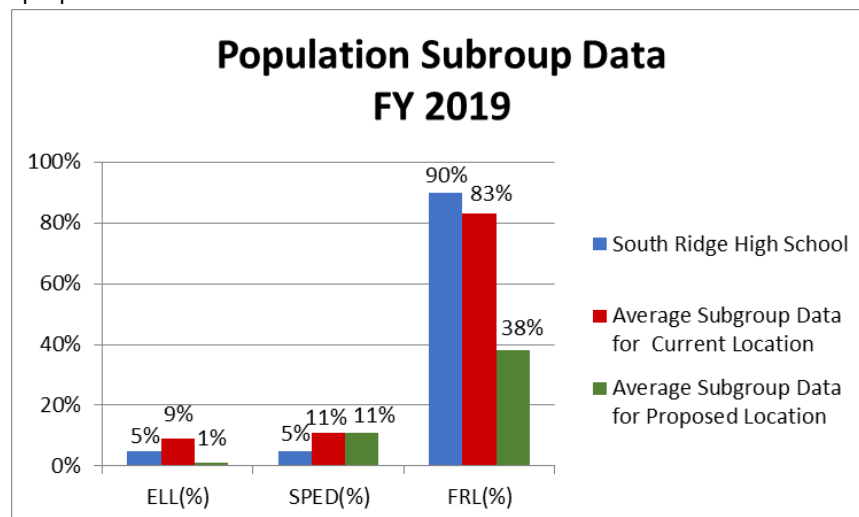
⁺FY 19 State Average Passing

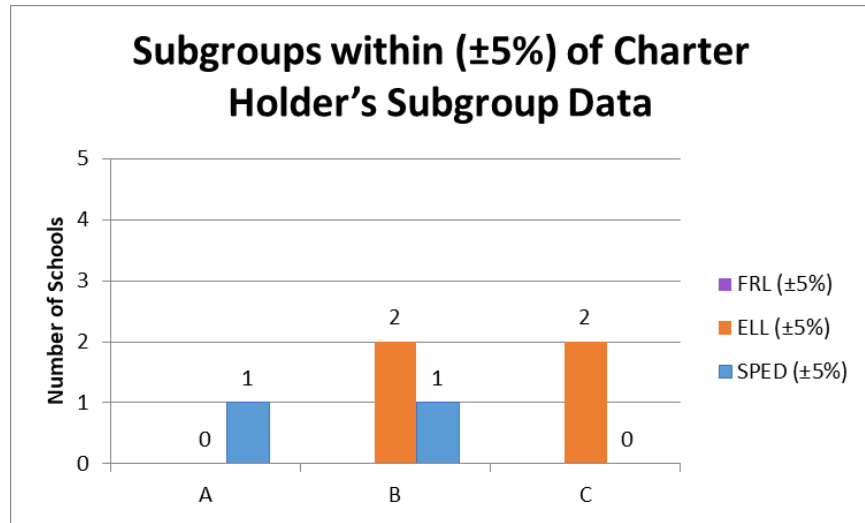
See Appendix B: ADE School Report Card Data for additional information about the School's letter grade.

Other Available Options

Subgroup Data for Nearby Schools

Information includes the Charter Holder's Subgroup data compared to the data of entities within a five-mile radius of the current and proposed locations.





Additional School Choices Serving Grades 9-12 within 5 Miles of South Ridge High School

Total Schools	FY 19 Letter Grade	Total Charter Schools	FY 2019 State Assessment Data Greater than the State Average		
			ELA (>42%)	Math (>42%)	Science (>52%)
1	A	0	1	1	1
3	B	3	0	0	0
5	C	0	0	0	0
2	D	1	0	0	0
1	N/A	1	1	1	0

Comparison of Schools within 5 miles of South Ridge High School

Total Schools	FY 19 Letter Grade	Total Charter Schools	FY 2019 State Assessment Data Greater than South Ridge High School		
			AzMERIT ELA (>26%)	AzMERIT Math (>43%)	AIMS Science (>16%)
1	A	0	1	1	1
3	B	3	2	0	2
5	C	0	1	0	1
2	D	1	0	0	0
1	N/A	1	1	1	0
Total Number of Schools Performing Better than South Ridge High School (Percentage of Total)					
12		5 (42%)	5 (42%)	2 (17%)	4 (33%)

Additional School Choices within 5 Miles of Proposed Location

Total Schools	FY 19 Letter Grade	Total Charter Schools	FY 2019 State Assessment Data Greater than State Average		
			ELA (>42%)	Math (>42%)	Science (>52%)
1	A	0	1	1	0
2	B	2	2	2	2
2	C	0	1	1	0

Comparison of Schools within 5 miles of Proposed Location

Total Schools	FY 19 Letter Grade	Total Charter Schools	FY 2019 State Assessment Data Greater than South Ridge High School		
			ELA (>26%)	Math (>43%)	Science (>16%)

1	A	0	1	1	1
2	B	2	2	2	2
2	C	0	1	0	1

Additional School Choices Serving Grades 9-12 within 2 Miles of Ridgeview College Preparatory High School (Proposed Location)

There are no schools serving grades 9-12 within 2 miles of the proposed location.

Schools Associated with South Ridge High School

See *Appendix B: Associated Schools*

Educational Plan Summary

This summary is based on information from the Charter Holder (see Appendix A-Application: Educational Plan).

The Charter Holder has affirmed that the Educational Plan of the proposed school will be consistent with the Educational Plan of the Replication Model School.

The Charter Holder’s mission is “to enhance the lives of students and families by providing high quality academics in a dynamic and rigorous learning environment that will prepare students for college and life-long learning.”

The Charter Holder’s curriculum is centered on standards-aligned curriculum maps and pacing guides. According to the narrative, teachers use lesson plans created at the network level which are in alignment with curriculum maps and guides to design rigorous teacher-led instruction that is engaging and at a college preparatory level. The Charter Holder’s philosophy is to provide “the scheduling, programs, extracurriculars, climate, and mentoring necessary to help all students realize their college dreams.” A customized approach to teaching as well as high-impact practices will ensure desired results for individualized success.

The Charter Holder will locate Ridgeview College Preparatory High School at the crossroads of Gary Road and Skyline Drive in San Tan Valley. The Charter Holder reports that, “South Ridge High School has a free-reduced population of 84.6%, SPED population of 4% and ELL population of 10%. The demographics are: 87.4% Hispanic, 7.2% Black or African American, 2.8% White, 1.4% Two or more, .7% American Indian/Alaskan Native and .5% Asian.” Conversely, the Charter Holder states that the target community, “reports an average free-reduced population of 50%. Both replicating school and target communities have small ELL populations (less than 10%). Although some demographics vary between the two communities (30% Hispanic, 50% White, 12% Black, 3% Native, 1% Asian), both are diverse and contain stable, small ELL populations.”

Operational Plan Summary

This summary is based on information from the Charter Holder (see Appendix A-Application: Operational Plan).

The Charter Holder has affirmed that the governance structure of the replication charter will be consistent with the organizational and governance structure of the existing charter.

The replication charter will be held by American Charter Schools Foundation d.b.a Ridgeview College Preparatory High School. The corporate board of American Charter Schools Foundation d.b.a Ridgeview College Preparatory High School and the governing body of the proposed school are identical to the Charter Holder and the Replication Model School governing body.

In the Operational Plan narrative, the Charter Holder described an organizational development plan led by Leona Arizona Management which will support Finance, Human Resources, Facilities, Risk Management, Technology and Academics. A dedicated Vice President of School and Leadership Development will support the administration at the replication school “in opening the school successfully.”



Facility Acquisition Summary

This summary is based on information from the Charter Holder see Appendix A-Application: Planned Facility

Site Information

Proposed School Name:	Ridgeview College Preparatory High School
Proposed Location	Cross streets of Gary Road and Skyline Drive in San Tan Valley, AZ
Proposed Facility	The proposed facility will be approximately 37,700 sq. ft. on 5 acres of land. It will include a two level building with 19 total classrooms and full gymnasium. The average classroom size will be 820 sq. ft. In addition, there will be a "robust computer lab, dance/weight room, chemistry lab and art studio", as well as a "27,000 sq. ft. field for student recreation."