

AGENDA ITEM EXECUTIVE SUMMARY: Grade Level Change to Charter with Enrollment Cap Amendment Request

Request

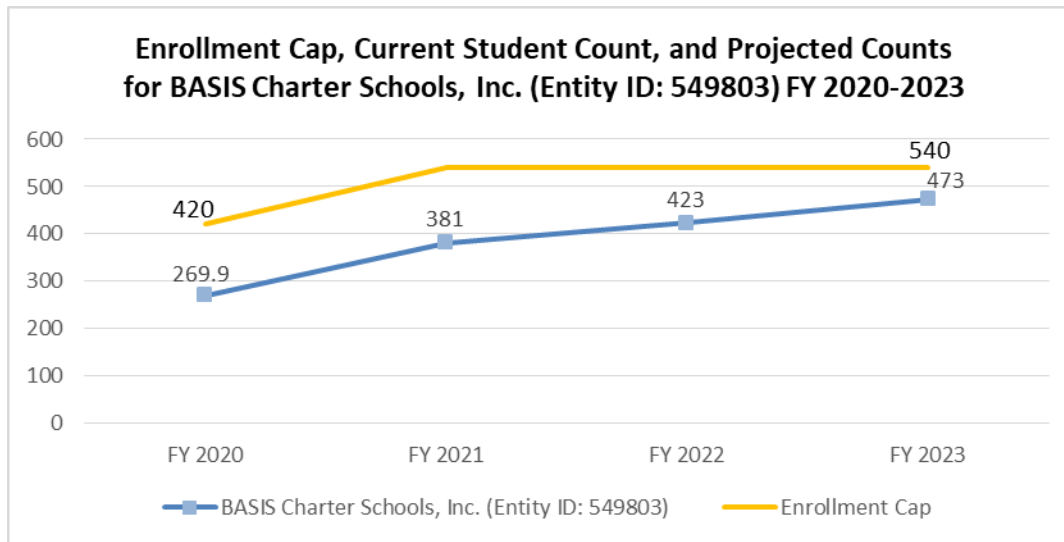
BASIS Charter Schools, Inc.—Entity ID 549803 (“Charter Holder”) submitted an expansion request to increase the grade levels the Charter Holder is approved to serve, from grades K-4 to grades K-5, and to increase the enrollment cap from 420 to 540, beginning in FY 2021. This expansion request accounts for three years of projected student enrollment.

See Appendix A: Amendment Request and Support Materials.

The Charter Holder is requesting to add grade five and increase its enrollment cap so that “BASIS Phoenix South Primary grade 4 students can remain on the same campus for the 2020-2021 school year.” The staffing plan accounts for three to four additional staff each year for the next three years, with three new 5th grade teachers in FY 2021. BASIS Phoenix South Primary plans to meet enrollment targets by backfilling seats with new students and maintaining historical retention rates. The narrative states that “A variety of methods will be used to build awareness and generate applications for BASIS Phoenix South Primary, including social media ads, other digital ads, Blasts, magazines and print ads.”

Three Year Plan

	FY 2020	FY 2021	FY 2022	FY 2023
Grade Levels	K-4	K-5	K-5	K-5
Enrollment	306	381	423	473



Staff Recommendation

The Charter Holder has not met the criteria to receive a staff recommendation for expansion.

Staff Recommendation Criteria	Analysis
In operation for three years.	The Charter Holder is in its third year of operation.
“Meets Operational Performance Expectations” based on the dashboards for the most recent two prior years and the current year.	The Charter Holder “Meets” the Board’s Operational Performance Expectations.
Grade level cohorts are at capacity or could fill enrollment for new grade requested.	The Charter Holder is proposing that 34 current fourth graders would fill a fifth grade cohort of 31. Enrollment can be filled for the new grade requested.
ADM is within 85% of current enrollment cap.	According to ADE School Finance, the Charter Holder currently has an ADM of 269.5. Accounting for kindergarten enrollment, the Charter Holder is currently operating at 74% of its current enrollment cap of 420.
Each school operated by the Charter Holder: Performs at or above the average performance of a majority of schools within a five-mile radius of the school’s location.	BASIS Phoenix South Primary performs at or above the average performance of nearby schools in ELA and Math. Information regarding nearby schools is provided on page 5.
Past enrollment trends indicate the charter will exceed its enrollment cap within the next three years.	ADM in FY 2018 was 153.9, in FY 2019 was 217.1, and in FY 2020 was 269.9 (as of January 9, 2020). Enrollment trends, combined with the added grade level, indicate that the charter will exceed its enrollment cap within three years.

Profile

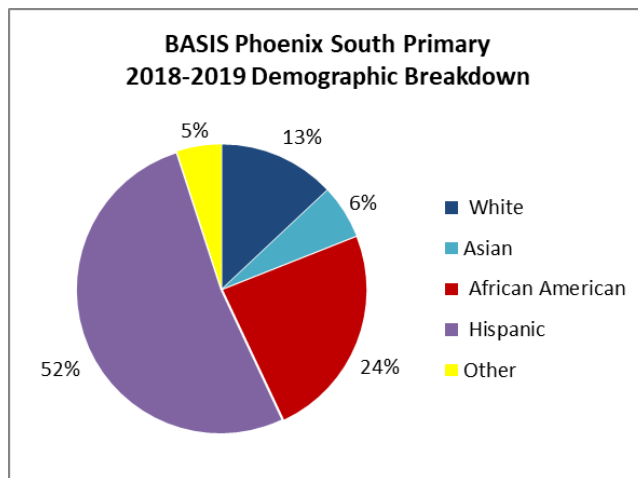
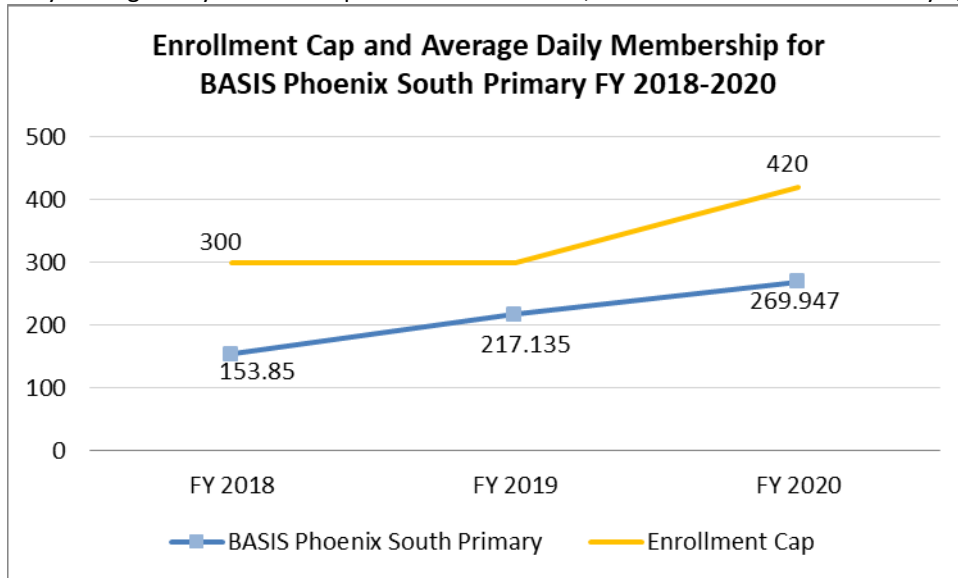
The Charter Holder was granted a new charter in 2016.

Governance

Corporate Board Members	School Governing Body Members	Type
Craig Barrett	Michael Beaulieu	School Staff
Donald Budinger	David Hubalik	Charter Organization
Shelly Esque	Hanqing Jiang	Community Member
John Morton	Kristen Jordison	School Staff
Mittida Raksanaves	Anthony Pitucco	Unknown
DeAnna Rowe	Mittida Raksanaves	Community
Terry Sarvas	DeAnna Rowe	Charter Organization
Steve Twist	Rizwan Safdar	Community

Enrollment and Demographic Data

100th Day Average Daily Membership for FY 2018–FY 2019, and FY 2020 ADM as of January 9, 2020.



2018-2019 Subgroup Data	
Free and Reduced Lunch	59%
English Language Learners	13%
Special Education	15%

Academic Profile

School Name	BASIS Phoenix South Primary		
Date Open	August 2017		
Location	Phoenix		
Grades Served	K-4		
FY 2019 Letter Grade	NR		
	FY 17	FY 18	FY 19
ELA AzMERIT (42%*)	N/A	N/A	64%
Math AzMERIT (42%*)	N/A	N/A	55%
Science AIMS (52%*)	N/A	N/A	N/A

*FY 19 State Average Passing

Comparison of A-F Letter Grade Data to BASIS Phoenix South Primary

Because BASIS Phoenix South Primary served only grades K–3 in FY 2019, the school was not issued a Letter Grade for that fiscal year. Therefore, a Letter Grade comparison to nearby schools' letter grade data is not possible.

See Appendix C: ADE AzMERIT Data for additional information about the School's academic performance.

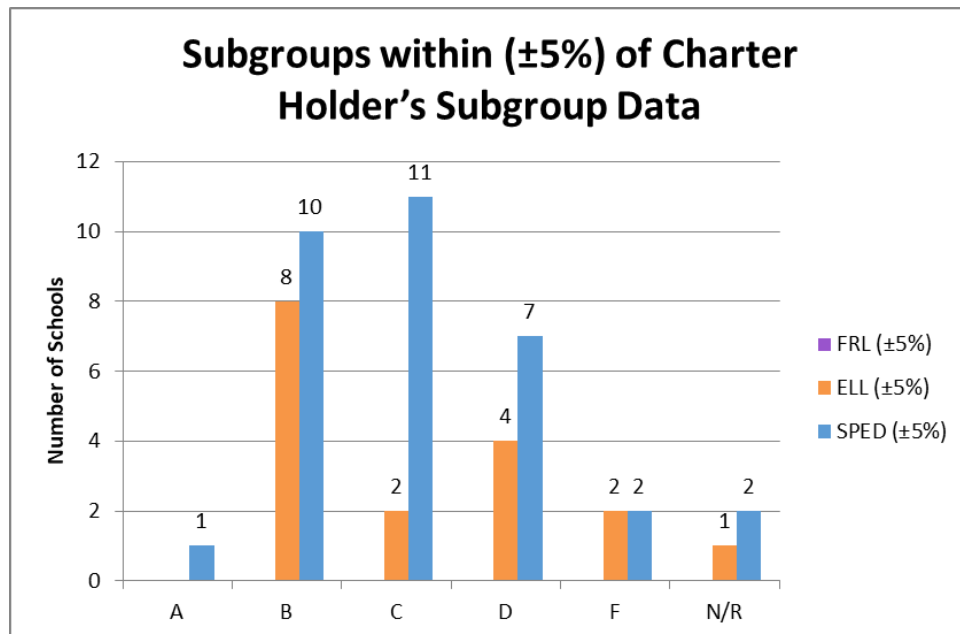
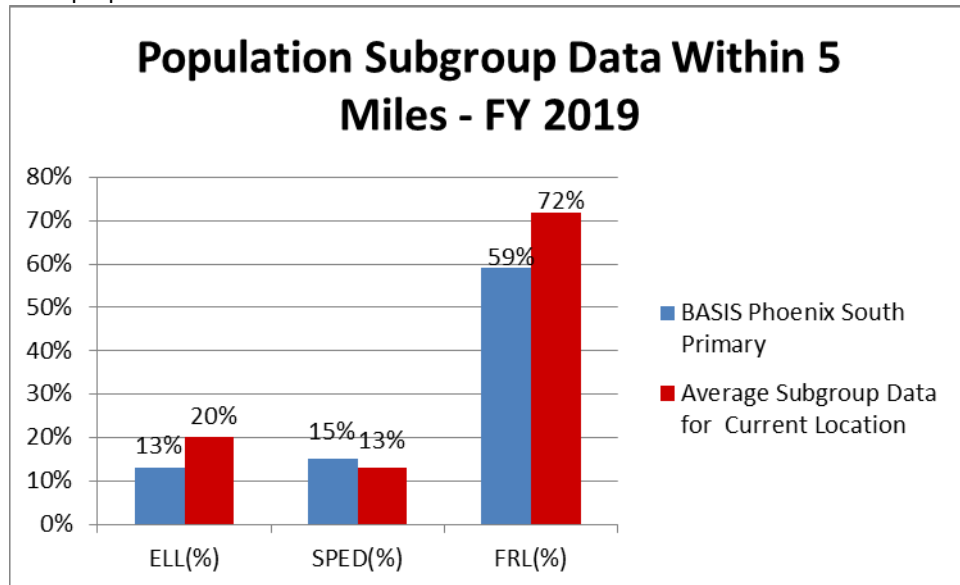
Schools Associated with BASIS Phoenix South Primary

Information about associated schools can be found in Appendix B.

Other Available Options

Subgroup Data for Nearby Schools

Information includes the Charter Holder's Subgroup data compared to the data of entities within a five-mile radius of the current and proposed locations.



Additional School Choices Serving Grades K–5 within 5 Miles of BASIS Phoenix South Primary

Total Schools	FY 2019 Letter Grade	Total Charter Schools	FY 2019 State Assessment Data Greater than State Average		
			ELA (>42%)	Math (>42%)	Science (>52%)
2	A	1	2	2	2
16	B	7	6	6	9
15	C	5	1	0	1
13	D	1	0	0	1
5	F	2	0	0	0
3	NR	1	0	0	0

Comparison of Nearby Schools within 5 Miles to BASIS Phoenix South Primary

Total Schools	FY 2019 Letter Grade	Total Charter Schools	FY 2019 State Assessment Data Greater than BASIS Phoenix South Primary		
			AzMERIT ELA (>64%)	AzMERIT Math (>55%)	AIMS Science (*%)
2	A	1	1	2	*
15	B	6	0	0	*
13	C	4	0	0	*
13	D	1	0	0	*
5	F	2	0	0	*
3	NR	1	0	0	*
Total Number of Schools Performing Better than BASIS Phoenix South Primary (Percentage of Total)					
51		15 (29%)	1 (2%)	2 (4%)	*

* Because BASIS Phoenix South Primary only served grades K-3 in FY 2019 no AIMS Science scores are available, so a comparison to nearby schools for Science is not possible.

Comparison of Nearby Schools within 2 Miles to BASIS Phoenix South Primary

Total Schools	FY 2019 Letter Grade	Total Charter Schools	FY 2019 State Assessment Data Greater than School Name		
			AzMERIT ELA (>64%)	AzMERIT Math (>55%)	AIMS Science (*%)
2	B	2	0	0	*
4	C	2	0	0	*
5	D	0	0	0	*
1	F	0	0	0	*
Total Number of Schools Performing Better than BASIS Phoenix South Primary (Percentage of Total)					
12		4 (33%)	0 (0%)	0 (0%)	*

*Because BASIS Phoenix South Primary only served grades K-3 in FY 2019, no AIMS Science scores are available, so a comparison to nearby schools for Science is not possible.

