

**AGENDA ITEM EXECUTIVE SUMMARY: School Specific Change in Grades and School Location  
Amendment Requests**

**Request**

Edkey, Inc. dba Sequoia Choice Schools (“Charter Holder”) submitted two amendment requests. One request is to change the grade levels served at Precision Learning Center from grades 9-12 to grades K-8, and one is to move the school’s location from Phoenix to Buckeye, beginning in FY 2021.

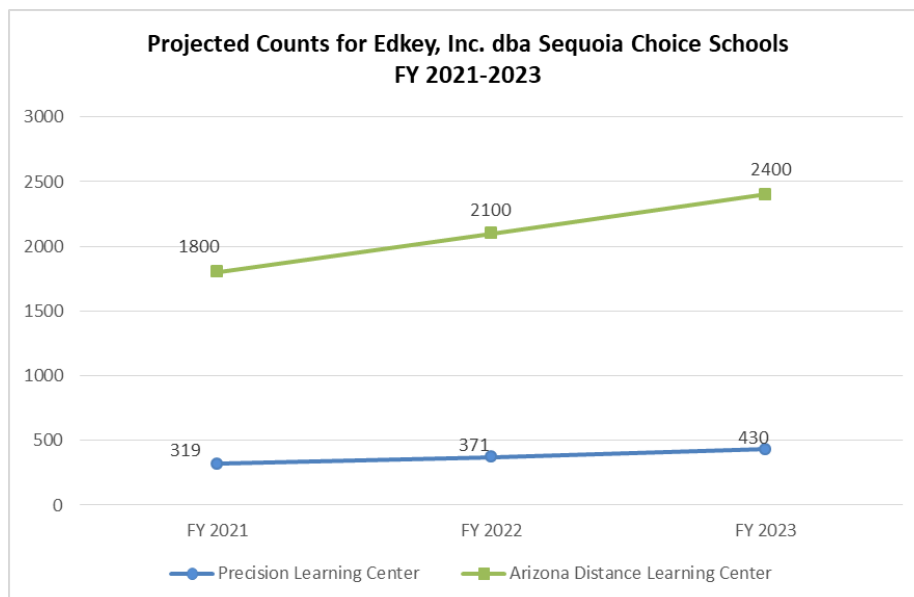
Through review of the amendment request, accompanying materials, and discussion with the Charter Holder, Board Staff understands that approval of this request will result in the Charter Holder serving an entirely new demographic and population of students through a model that is significantly different than the current model. Currently, Precision Learning Center uses computer based curriculum and instruction. Upon approval, the school would use a combination of print and technology-based curriculum within a more traditional classroom setting.

*See Appendix A and B: Amendment Request and Support Materials.*

The Charter Holder has requested to make these changes in order to “provide an educational option for students in an area with limited school choices for students in grades K-8” that is experiencing rapid growth. The Charter Holder intends to replicate the program of instruction currently used at Pathfinder Academy at Eastmark in Mesa (operated under a separate charter held by Edkey, Inc.). Pathfinder Eastmark’s educational program, according to the contract, is designed to provide a “sequentially organized curriculum that is aligned with the Arizona Academic Standards, a traditional history and geography curriculum that emphasizes patriotism and a basic knowledge of the fundamentals of self-government, and a math program where a student can progress as rapidly as he/she wants without age or grade restraints.” The changes to Precision Learning Center will require hiring 16 new teachers, four paraprofessionals, and a new administrator. The Charter Holder intends to meet its enrollment targets through digital marketing, contracting with a PR firm, and holding an information booth inside a neighboring church.

**Three Year Plan**

	FY 2020	FY 2021	FY 2022	FY 2023
<b>Grade Levels</b>	9-12	K-8	K-8	K-8
<b>Enrollment</b>	27	319	371	430



Because the Charter Holder has an unlimited Enrollment Cap, this data is not represented on the chart.



## Profile

The Charter Holder was granted a renewal charter in 2012.

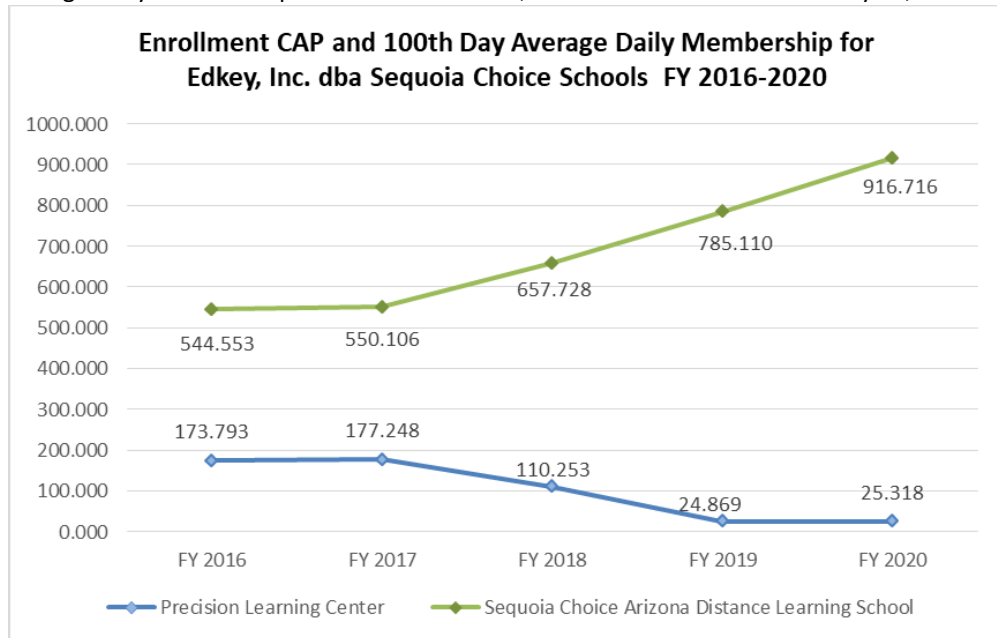
### Governance

Corporate Board Members
Susan Ciardullo
Mary Gifford
Patric Greer
Herald Harrington
Horacio Huerta
Karen Liepmann
Mark Plitzuweit

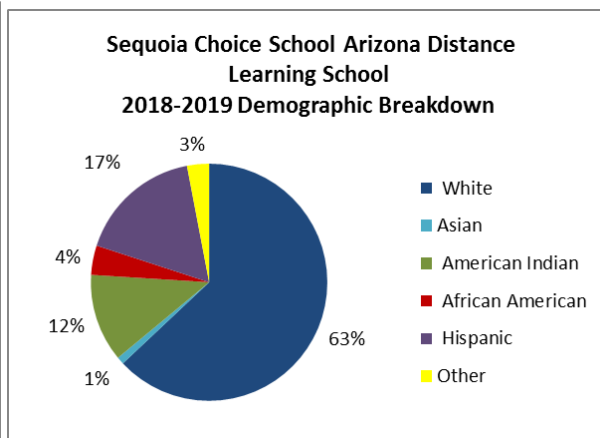
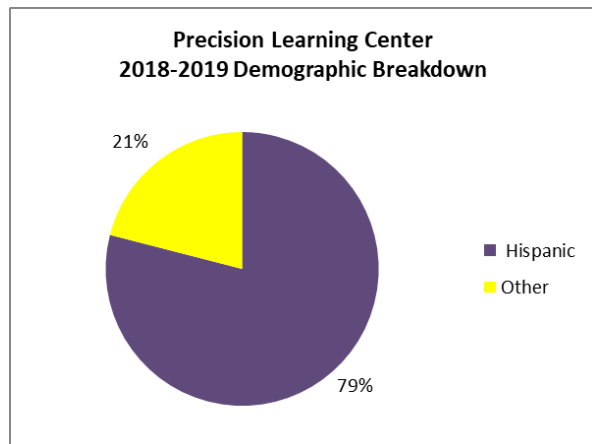
School Governing Body Members	Type
Alfonso Alva	School Staff
Don Flake	Charter Organization
Beth Kulish	School Staff
Tony Rhineheart	School Staff

### Enrollment and Demographic Data

100th Day Average Daily Membership for FY 2016–FY 2019, and FY 2020 ADM as of January 28, 2020.



Because the Charter Holder has an unlimited Enrollment Cap, this data is not represented on the chart.



2018-2019 Subgroup Data Precision Learning Center	
Free and Reduced Lunch	*
English Language Learners	28%
Special Education	12%

2018-2019 Subgroup Data Arizona Distance Learning School	
Free and Reduced Lunch	36%
English Language Learners	4%
Special Education	7%

*\*If the percentage of students is 0% or 100%, or the group includes less than 10 students, the percentage for that group is redacted.*

### School Profiles

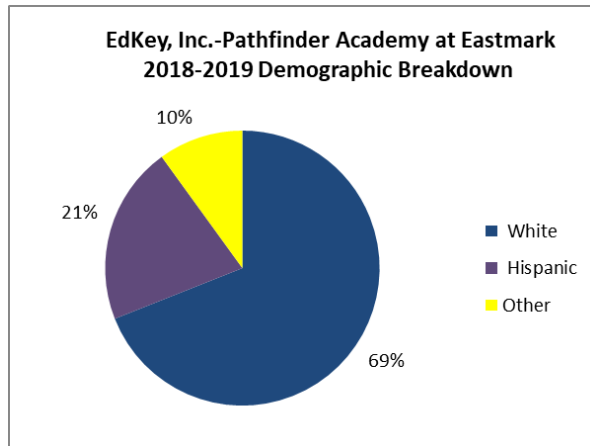
School Name	Precision Learning Center			Sequoia Choice School Arizona Distance Learning School		
Date Open	August 2009			August 1999		
Location	Phoenix			AOI-Statewide		
Grades Served	9-12			K-12		
FY 2019 Letter Grade	NR			NR		
	FY 17	FY 18	FY 19	FY 17	FY 18	FY 19
ELA AzMERIT (42% <sup>+</sup> )	11%	11%	*	52%	41%	41%
Math AzMERIT (42% <sup>+</sup> )	24%	11%	*	36%	36%	30%
Science AIMS (52% <sup>+</sup> )	14%	6%	*	47%	46%	48%

*\*FY 19 State Average Passing*

*\*If the percentage of students is 0% or 100%, or the group includes less than 10 students, the percentage for that group is redacted.*

### Model School Profile

2018-2019 Subgroup Data	
Free and Reduced Lunch	*
English Language Learners	9%
Special Education	21%

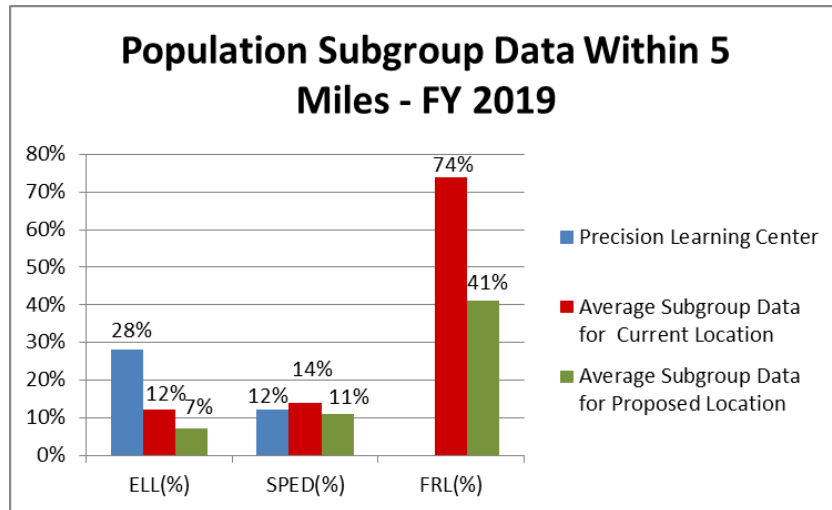


Charter Holder	Edkey, Inc. dba Pathfinder Academy		
School Name	Edkey, Inc.-Pathfinder Academy at Eastmark		
Date Open	August 2014		
Location	Mesa		
Grades Served	K-6		
FY 2019 Letter Grade	B		
	FY 17	FY 18	FY 19
ELA AzMERIT (42% <sup>+</sup> )	68%	56%	61%
Math AzMERIT (42% <sup>+</sup> )	61%	49%	56%
Science AIMS (52% <sup>+</sup> )	86%	55%	78%

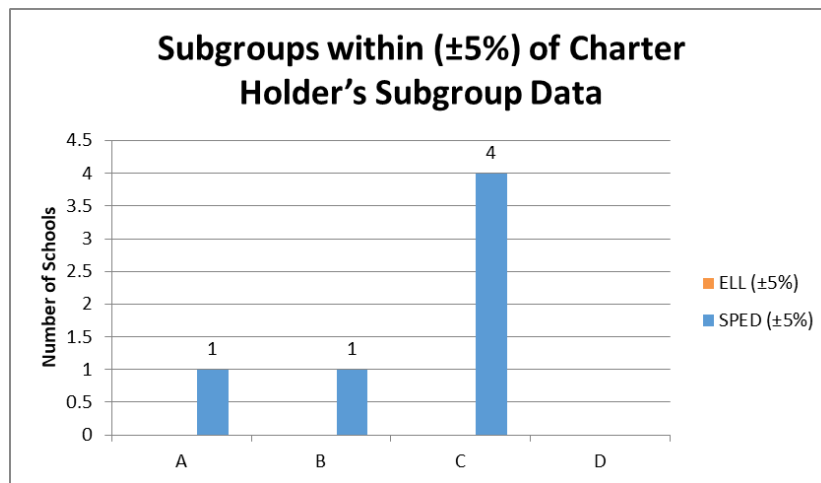
## Nearby Schools Information

### Subgroup Data for Nearby Schools

Information includes the Charter Holder's Subgroup data compared to the data of entities within a five-mile radius of the current and proposed locations.



\*FRL data is not available for Precision Learning Center for 2018-2019



\*Because the percentage of FRL students is not available for Precision Learning Center, comparison to nearby schools is not possible.

### Additional School Choices Serving Grades 9-12 within 5 Miles of Precision Learning Center

Total Schools	FY 19 Letter Grade	Total Charter Schools	FY 2019 State Assessment Data Greater than State Average		
			ELA (>42%)	Math (>42%)	Science (>52%)
8	A	6	6	7	4
3	B	2	2	1	1
6	C	2	0	0	0
2	D	2	0	0	0

Additional School Choices Serving Grades 9-12 within 2 Miles of Precision Learning Center

Total Schools	FY 19 Letter Grade	Total Charter Schools	FY 2019 State Assessment Data Greater than State Average		
			ELA (>42%)	Math (>42%)	Science (>52%)
2	<b>A</b>	1	2	2	1
1	<b>D</b>	1	0	0	0

Comparison of Nearby Schools to Precision Learning Center

Because AzMERIT Assessment Data for Precision Learning Center is not available, a comparison to nearby schools is not possible.

Additional School Choices Serving Grades K-8 within 5 Miles of Proposed Location

Total Schools	FY 19 Letter Grade	Total Charter Schools	FY 2019 State Assessment Data Greater than State Average		
			ELA (>42%)	Math (>42%)	Science (>52%)
3	<b>A</b>	0	3	3	3
5	<b>B</b>	2	3	3	5
3	<b>C</b>	1	0	0	1
2	<b>D</b>	0	0	0	0

Schools Associated with Precision Learning Center

See Appendix C: Associated Schools

