
AGENDA ITEM: Amendment Application – Park View School, Inc.**Park View School, Inc. - Park View Middle School
Amendment Application Summary Report**

Park View School, Inc., a non-profit entity, submitted a complete amendment application for increasing the grade levels served at Park View Middle School in Prescott Valley.

Park View School, Inc. was granted a charter in 1998 and opened Park View Middle School in 1999. Effective July 1, 2009 Park View School, Inc. entered into a 5-year management agreement with Westwind Children's Service, Inc. (WCS). Under the agreement, WCS provides educational and administrative services. WCS also provides services to two other charters and share common board members: Westwind Preparatory Academy and Westwind Middle School.

As required in Board policy, staff conducted a compliance check as part of the amendment and notification request approval process prior to a charter school being placed on an agenda. This included an assessment of whether Park View Middle School and the related party schools meet or demonstrate sufficient progress toward the Board's level of adequate academic performance.

As shown in the graphs that follow, each school has not met the level of adequate academic progress or demonstrated consistent growth in each content area and, therefore, this amendment was considered ineligible for consideration as a consent agenda item.

The charter holder has provided a narrative and documents to support their case for amending the charter which can be found following the data graphs.

The narrative and attachments include evidence of community support for the expansion of the charter as well as discussion of improvement to the program of instruction that could provide an additional choice for the students in Prescott Valley.

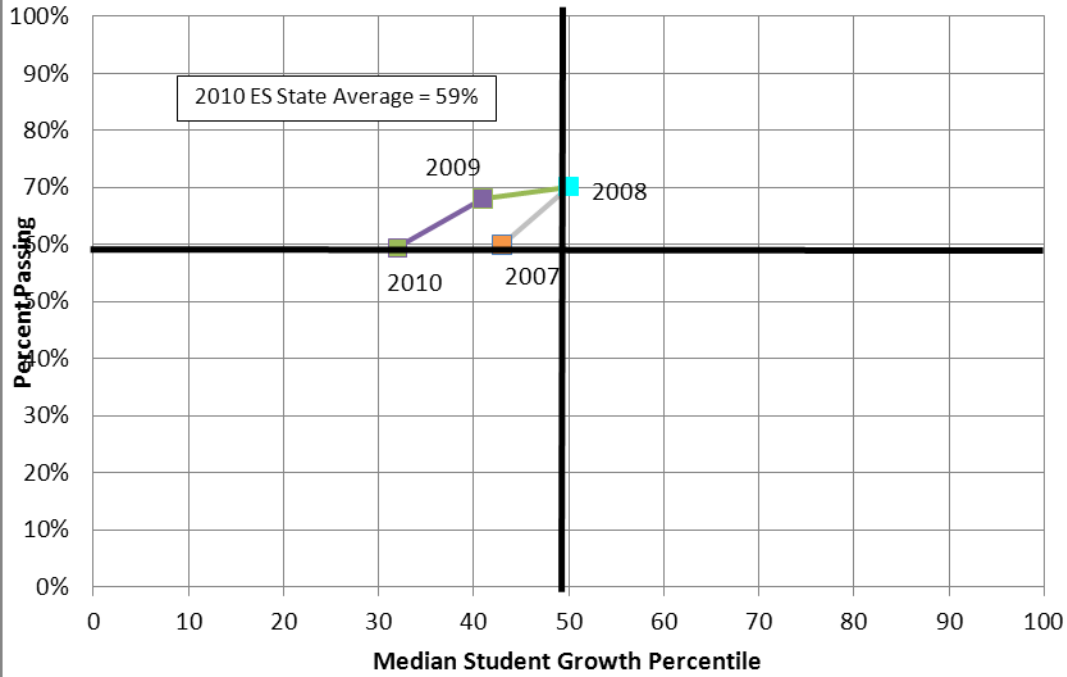
Board Options

1. Accept the amendment to add grade levels 9 and 10 to the Park View Schools, Inc. charter.
2. Deny the amendment to the Park View Schools, Inc. charter.

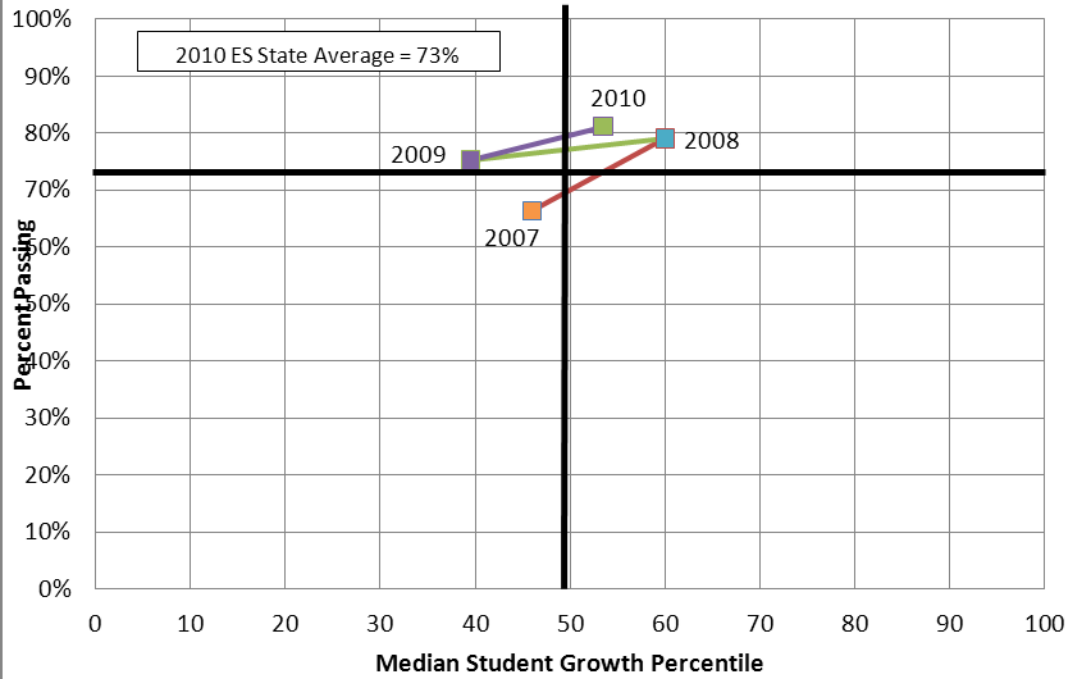
Staff Recommendation:

Option 1

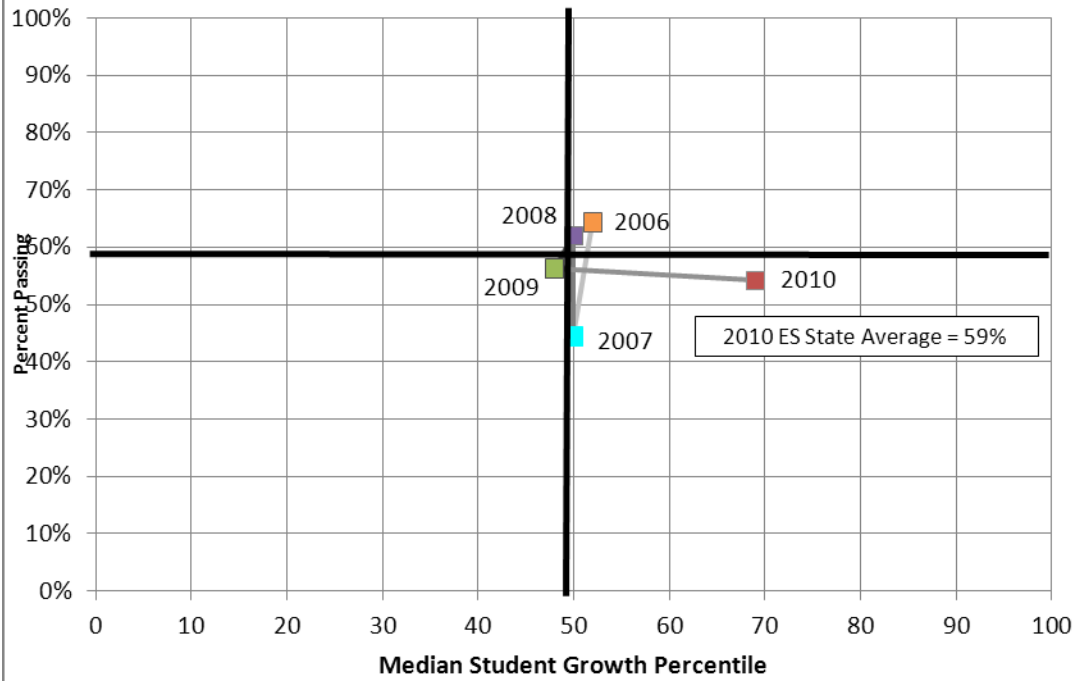
Park View School, Inc. - Park View Middle School
Academic Achievement - AIMS ES Math



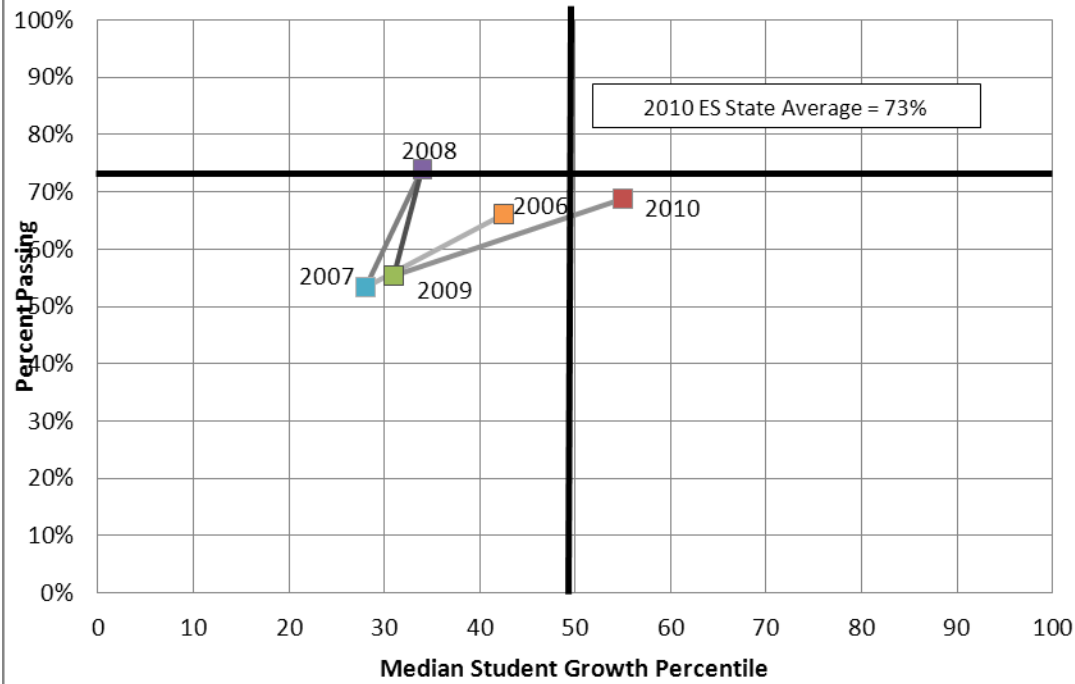
Park View School, Inc. - Park View Middle School
Academic Achievement - AIMS ES Reading



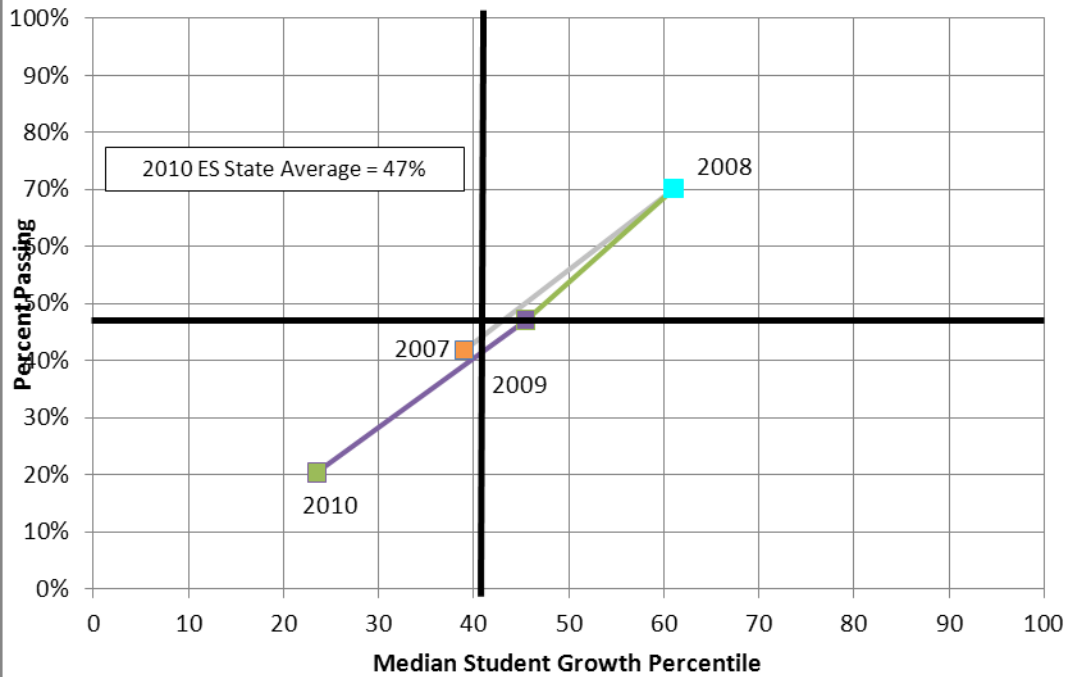
Westwind Middle School Academy - Westwind Middle School
Academic Achievement - AIMS ES Math



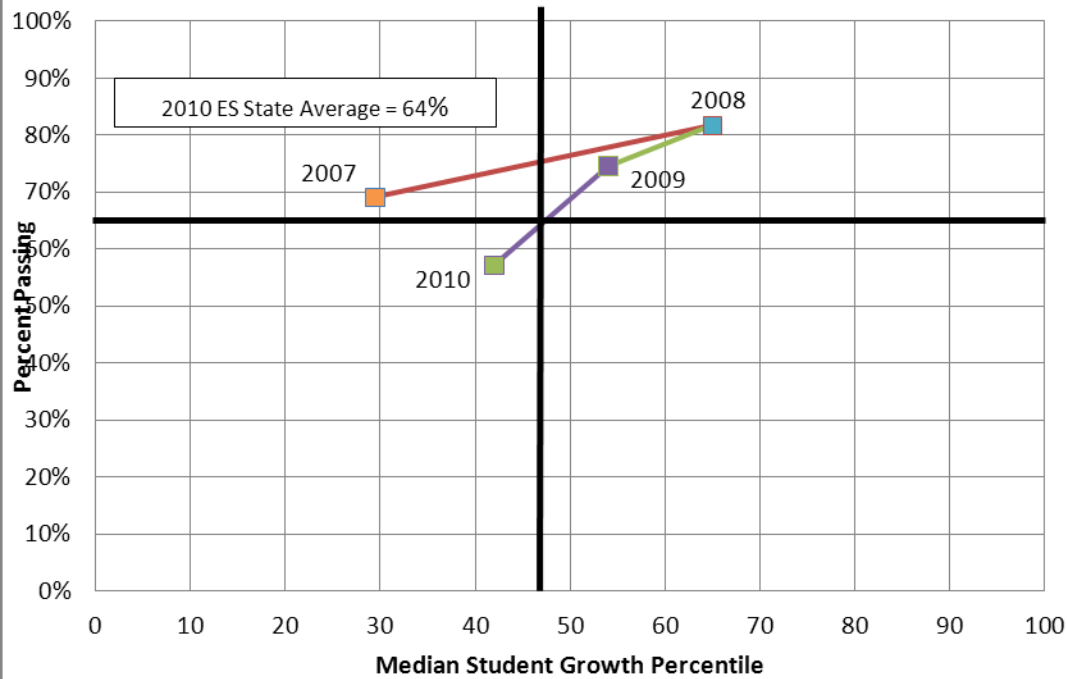
Westwind Middle School Academy - Westwind Middle School
Academic Achievement - AIMS ES Reading



Westwind Children's Services - Westwind Preparatory Academy Academic Achievement - AIMS HS Math



Westwind Children's Services - Westwind Preparatory Academy Academic Achievement - AIMS HS Reading



Park View School, Inc. Adding Grade Levels To Charter Amendment Request

- **Request Form: (Attachment A)**
- **Board Meeting Minutes: (Attachment B)**
- **Letters of Support: (Attachment C)**
- **Course Samples, Math & Language Arts: (Attachment D)**
- **Comparative Performance Spreadsheet: (Attachment F)**
- **Composite Drawing of New Facility: (Attachment E)**

Narrative

Background & Support for Expansion

For the past four years, the parents of Park View students have been asking that we add a high school. **(Attachment C)** They have said that they want a smaller high school with the same student-centered philosophy that has branded Park View. Three years ago, we attempted to fulfill the parents' request. However, a funder was not available to provide financing for a larger facility; and there isn't room to have a full service high school at the existing site. At the end of last year, again parents came to Debra Slagle, the charter representative, and Mary Bruhn, the principal, requesting that Park View add a high school. In the focus groups that were held, parents indicated that they wanted a "full service" high school. They also expressed a strong desire for a high school that is smaller than the only district high school in the area, Bradshaw Mountain.

While there is such a school approximately ten miles from Park View, that particular charter school always has a long waiting list. Other charter high schools in the area are not traditional in nature but more self paced or alternative. When asked about adding the International Baccalaureate Programmes at the high school and possibly the middle school, both parents and local business people were tremendously supportive. In fact, the business community has been so supportive, that the owner of the property the school is purchasing agreed to a significantly lower price than for what the property was originally listed. Because Westwind Prep has already been through the IB application process and the current Park View principal has been through IB training, we are intimately aware of the significant amount of work involved in implementing this program, as well as the tremendous benefits it offers for students.

When the concept of the new school was discussed with Burt Mullins, the admissions director for Embry Riddle Aeronautical University's Prescott campus, and IB was mentioned, he responded, "those are the two magic letters I was hoping to hear." Mullins has said, "IB students are the ones we all go after. The best schools love the IB program. At Embry-Riddle Aeronautical University and many private universities, IB students' applications go immediately from the big pile to the little pile."

Park View will also be applying immediately for accreditation through NCA (AdvancED). Both Debra Slagle and Mary Bruhn have been thorough the accreditation process before and are, therefore, familiar with the requirements.

Because of the consistent interest by the community, the board decided to pursue financing for a new facility that will house both Park View Middle School and a high school program that the students have voted on to be called Canyon View Prep Academy. It would be the only traditional “full service” charter high school in the town of Prescott Valley. The firm that financed AMCS at Anthem dba Caurus Academy, Lawson Financial, has agreed to finance the project, and Pima Industrial Development Authority approved the Park View application for IDA bond financing. As a result, the Park View board has decided to go forward with adding grades, a site and a new facility. This is particularly good for the existing program because its current facility is in need of updating and expansion. Financing on the facility closed the first week of April, and ground breaking commenced the week following. The new 29,00 square foot facility (**Attachment E**) will be ready for the 2011/2012 school year. Further assurance of completion by the date school opens is the late penalty incorporated into the general contractor’s construction contract for any day after July 20th that the facility isn’t cleared for occupancy. Once the required documentation is available, Park View will be submitting a notice to the SBCS for the move to the new facility.

Support for the Philosophy, Methods of Instruction & Mission

Subsequent to the execution of the Charter School Contract, and in anticipation that Park View might eventually apply for and open a high school, and pursuant to requests from the Arizona Department of Education to clarify the school’s name, the original charter representative sought to change both its company name and the name of the charter operated under the Charter School Contract to a name more similar to the school name, Park View Middle School. Therefore, on December 17, 2001, original charter representative filed its articles of amendment with the Arizona Corporation Commission, changing the corporate name from Groenig Education, Inc. to Park View School, Inc., and such corporate name change was effectuated with the ASBCS through the filing of its Amendment Request dated May 14, 2002, changing the name of the Charter Operator from Groenig Education, Inc. to Park View School, Inc.

The mission statement in Park View’s original charter application states the following:

[Park View] Middle School is committed to providing a broad, relevant education to all of its 6,7 and 8th grade students to help develop life-long learners; assisting them to become responsible, useful members of their communities. Education will emphasize application skills that go beyond the textbook information to include problem solving in as many areas as logically possible.”

The addition of grades nine and ten, and then eleven and twelve in the future, strongly supports the school’s mission, philosophy and methods of instruction that provide a broad, relevant education and helping our students become life-long learners. While students will be able to choose the IB track or general education, the curriculum will be

rigorous and relevant, designed to do what is stated in the mission: assisting students in becoming responsible, useful members of their communities. Instruction will require students to analyze, synthesize and apply what they are learning, which supports the methods of instruction and instructional philosophy set forth in the charter.

Timeline for Implementation

Park View will be adding grades nine and ten for the 2011/2012 school year. We are scheduled to move into our new facility July 15th. If there is a problem with moving in by August 16, the first day of school, enrollment will be limited to capacity at the existing site. There is currently room for an additional 50 students at the existing site

A new administrator has been hired to focus primarily on the grade levels being added. This new administrator has experience with the International Baccalaureate Program, as well as a specialty in curriculum and development. Teachers certified in the secondary content areas of Language arts, Math, Biology, Spanish and Economics have been hired for the upcoming school year to provide instruction for the ninth and tenth graders who enroll. While we recognize that this is a risk due to where we are in the amendment approval process, it is important to us that we have the best teachers we can get on board. We have minimized the risk through verbiage in our employment agreements. The new facility will also have separate areas for high school classrooms and middle school classrooms. The high school and middle school will share athletic facilities.

Proficiency Levels Required for Credit, Credit Transfer & Graduation

Students will be required to pass at the 70% proficiency level in order to receive credit for each course. For benchmarking and targeted instructional purposes, both Park View and Canyon View will be using *Acuity*, beginning with the 2011/2012 school year. This will allow us to more quickly identify and respond to the gaps in students' academic performance, which should result in increased student growth. Once Canyon View is approved as an IB World School, students will participate in both the state assessments and the IB assessments as well as our internal assessments. Assessments for the IB are internal and external. Teachers have access to the IB organization's Online Curriculum Centre (OCC). Not only will this provide the school with a comparison of how our students are performing relative to students around the world, it will allow teachers access to rigorous and relevant curriculum used by teachers all over the world. Students transferring in will be required to have a C or better in a course to receive transfer credit. Requirements for graduation will align with Arizona's requirements for high school graduation. Students receiving the IB Diploma or IB Certificates in addition to their high school diploma will have additional assessment, essay and service requirements. Individuals teaching IB courses will also be teaching general education courses. Because all IB teachers must go through the IB training before teaching an IB course, all students will benefit from this program.

All curriculum and instruction will align with the Common Core Standards and the Arizona Academic Standards. Canyon View will be using Pearson textbooks in English, Math and Science, as well as the Great Books series. Park View will be transitioning to these instructional resources as part of the plan to improve student academic performance as demonstrated on the state mandated assessments.

Factors Impacting Academic Performance

Park View Middle School has a Performing Plus label. It has met AYP. According to the spreadsheet downloaded from ADE in February 2011, Park View exceeded the State SGP in reading and math in 2010. According to this ADE spreadsheet, Park View also exceeded the SGP for the surrounding district and the closest district middle school for 2010. Debra Slagle, the charter representative, met with SBCS staff at that time to review the data available prior to proceeding with the expansion project. The decision to move forward was based in part on the data available at that time. However, the data received from the Arizona Charter Schools Association and other data updates conflict with the earlier ADE spreadsheets, indicating that Park View did not meet the state SGP. We are not sure the reason for this discrepancy. Be that as it may, we recognize the need to improve the student growth and academic performance of our students in the areas of reading and math. As a result, this past year, Park View's principal not only disaggregated the data, distributed it to teachers, required an action plan based on the test results and monitored implementation of those activities, AIMS practice tests were given on a quarterly basis and teachers were required to document the modifications made to instruction relative to the results of those tests. Remediation specific to individual student results was incorporated into instructional time as well. *Acuity*, the online assessment tool and intervention software will be used by Park View and Canyon View, beginning with the 2011/2012 school year. With addition of a second administrator to focus on the new grade levels, supervision to facilitate increased academic performance will not be compromised. This summer, teachers are going to review all curriculum, particularly relative to the changes in standards. During this time, teachers and administrators will also review standardized assessment results to make modifications to curriculum to address issues indicated from test results.

Because Park View School, Inc. has a Management Services Agreement with Westwind Children's Services, we understand that the SBCS reviews the academic performance of the related school as well. While Westwind Prep is a Performing school, it has recently seen a decrease in student growth. When Debra Slagle, the charter representative, recognized that this was occurring, she began to develop an improvement plan to address these issues. As Paul Hill says in his book, *Fixing Urban Schools*, it is important to address both the immediate management of the problem and long term planning. Several years ago, the interventions that Ms. Slagle required of administrators and teachers resulted in Westwind going from Underperforming to Highly Performing. These interventions, as well as others have now been re-established and will continue to be in place. Among those are the following:

- The involvement of an outside consultant (in this case, through ACSA and in the past through WestEd) to review all areas that may be impacting the drop in academic performance, such as teacher instruction; lesson plans, curriculum; assessments and instructional materials, as well as non-academic factors.
- Involvement of the whole staff in the development and completion of a school improvement plan. that will include setting measurable goals for student growth in reading, math and science; reviewing evaluations by external consultants; reviewing instructional resources; reviewing curriculum; reviewing assessment data; and reviewing internal assessments. After review of these areas, creating an action plan and evaluation process.
- Quarterly benchmark assessments (in this case done through *Acuity*) with monitored adjustments to instruction and interventions based on the data from the assessments.
- Required structured reading time in ALL content areas with student responses graded by teachers and turned in once a week to an administrator to ensure compliance with this requirement.
- Evaluation of the administrator's role in the success or lack thereof in student academic performance and a plan of action relative to the administrator's role in turning around the performance of students in the school.
- Evaluation of teachers' roles in the success or lack thereof in student academic performance. If it is determined that a teacher's performance is not to the level that will have a positive impact on student academic growth, their employment will be terminated.
- Identify relevant professional development activities necessary to help teachers improve student academic performance.
- Increased monitoring by the superintendent/charter representative.

Westwind Prep has experienced a significant increase in the number of ESL students, special education and homeless students enrolled over the past two years. (**Attachment F**) As a result, we have had to increase our interventions to target students who are ESL or eligible for special education services, as well as those who have gaps in their learning due to societal issues. We worked with Rebecca Gau, including having her do a staff training, to address the changes in academic performance. In addition to this, we have acquired a testing program to closely monitor benchmarks for all our students, but specifically those who fall into these subcategories, with instructional interventions specific to students that are tied to the benchmark results. Students who have a D or F are required to come Friday mornings for tutoring. Other factors that may have played a role in the significant decrease, particularly in math, are as follows: change in school principal, loss of an extremely effective math teacher, need to replace an extremely ineffective math teacher mid-year, curriculum re-write, change in content delivery timeline. Westwind administration has met with Dr. Lasco at ACSA to determine which factors to address first and what training will occur early this summer to address weaknesses in the program that may be affecting student academic performance. The work that the association has done with schools to assist in improving student performance has resulted in statistically significant increases in student growth.

Ms. Slagle wanted to bring an academic program into Westwind Prep that is widely recognized for its rigor and ability to prepare students for higher education, as well as its assessments that allow the school to see how it performs relative to other schools worldwide. As a result, Westwind applied for the International Baccalaureate Diploma Program two years ago. Westwind became an International Baccalaureate Candidate School last year; and recently was awarded full status as an IB World School, with the ability to offer the IB Diploma Programme. This has allowed us access to rigorous curriculum via the IB's online curriculum center, which should also increase academic performance for all students because our IB trained teachers also teach general classes. The IB Diploma Programme will be offered at Westwind, beginning with the 2011/2012 school year. This past year, teachers were trained and began to teach Pre0-IB classes to incoming freshmen to prepare them for the IB Diploma Programme.

While looking at Westwind Prep, it is also important to look at another school that has a management services agreement with WCS, AMCS at Anthem dba Caurus Academy. This is particularly relevant because the demographics of Caurus and Park View are more closely aligned than those of WPA and Park View. It is one of the examples that demonstrates Ms. Slagle's willingness to take on the difficult tasks involved to make sure that a school turns around, from an academic and compliance perspective, as well as from a community investment perspective. Ms. Slagle became the charter representative for AMCS at Anthem dba Caurus Academy at a time when it had compliance issues and was struggling with enrollment. This past year, Caurus's students showed significant growth in reading and math. Furthermore, the school has a new facility and its enrollment has gone from 65 students to 354 students enrolled for the upcoming school year and a waiting list of over 50. The principal at Caurus, Mrs. Rides, was a teacher supervised by Ms. Slagle for ten years at Westwind Prep during which time the original school improvement plan resulted in the significant increases in student academic performance. Mrs. Rides has ensured that many of the research-based instructional methods that were used at Westwind Prep are consistently in place at Caurus. This is one of the primary factors resulting in the success of Caurus Academy.

The addition of high school grade levels at Park View School, Inc. in Prescott Valley will bring a much needed choice for a full service, college prep charter high school to the area. This growth is in line with the school's mission, philosophy and methods of instruction.. Park View Middle School has an excellent reputation in the community; and as a result, the response to the addition of grade levels has been overwhelming. The new facility is being built to house 400 students, with an estimated time to achieve that level of enrollment to be four years from now. The school has already received enrollment forms for over 200 students. While it is almost impossible to get financing in this market, we have been able to obtain financing for the new facility, and its construction is under way. The leadership of the school, both Park View and WCS, recognizes the importance of monitoring the academic performance of each student attending and ensuring that optimal academic growth occurs. Furthermore, we have a strong commitment to ongoing school improvement for the sake of our students. We respectfully request that the SBCS approve our request to add two grade levels for the upcoming year.

ARIZONA STATE BOARD FOR CHARTER SCHOOLS
Arizona State Board of Education
1700 W. Washington St., Room 164, Phoenix, AZ 85007
(602) 364-3080 Fax (602) 364-3089
www.asbes.az.gov

Attachment A

ADDING GRADE LEVELS TO CHARTER AMENDMENT REQUEST

(Charter Holder Name) Park View School, Inc. (CTDS) 138755

(Charter Holder Mailing Address) 2045 W. Northern Avenue

(City, State) Phoenix, AZ (Zip) 85021

(Charter Representative's Name) Debra Stagle

(Phone Number) 602/864-7731 (Fax Number) 602/841-4260

Failure to submit all required documentation will result in the Amendment Request being returned without being processed. Faxed copies will not be accepted. Please send originals.

☐ **Adding grade levels served for charter**

Included are the following:

- Board minutes approving the change (If the body is subject to Open Meeting Law, minutes must comply with ARS §38-431.01)
- Narrative that 1) provides background and support for expansion; 2) how the additional grades support the philosophy, methods of instruction, special emphasis, and mission of the charter
- Timeline for implementation
- Proficiency level required for credit and/or promotion and credit transfer policies

For each grade level being added, provide the following as a representation of a program of instruction aligned to the State Academic Standards and to the methods of instruction described in the charter:

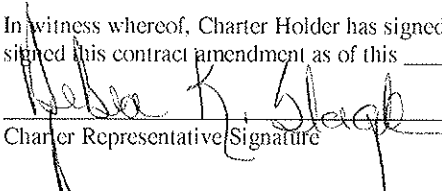
- Math – A completed curriculum sample template including all required attachments as outlined on the template attached.
- Language Arts - A completed curriculum sample template, for both reading and writing, including all required attachments as outlined on the template attached.

The Arizona State Board for Charter Schools and Park View School, Inc. (Charter Holder), herein agree to amend the terms of the charter contract as follows:

FROM SERVING GRADES: 6-8

TO SERVING GRADES: 6-10

In witness whereof, Charter Holder has signed this contract amendment as of this 29 day of April, 2011, and the State Board for Charter Schools has signed this contract amendment as of this ____ day of ____, 20__, to take effect at such time as it is signed by both parties.

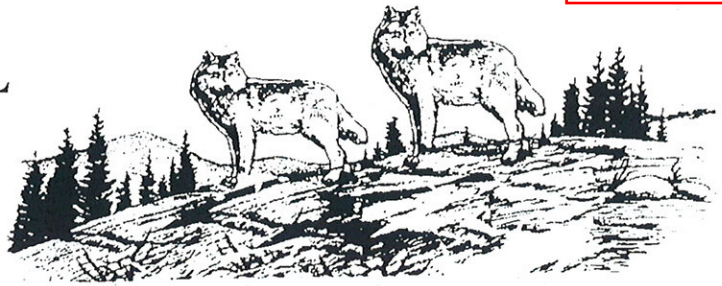

Charter Representative Signature

Representative Signature for the Arizona State Board for Charter Schools

07/14/09

PARK VIEW MIDDLE SCHOOL

8300 E. Dana Drive
 Prescott Valley, AZ 86314
 Phone (928) 775-5115
 Fax (928) 775-6253



Park View Middle School
 Board Meeting Minutes
 January 25, 2011
 2:00 P.M.

In attendance: Debra Slagle, Charles Slagle, Mary Bruhn and Dawn Revere

The meeting was held telephonically.

The meeting was called to order at 2:45 P.M.

Dawn Revere motioned to approve adding a site and adding 9th and 10th grades served. Charles Slagle seconded and the motion passed unanimously.

(The Board may decide to move into executive session pursuant to ARS §38-431.03(A)(3) and ARS §38-431.03(A)(4) for advice of counsel.)

The board discussed the list of names for the new site. The board item was tabled and will be revisited at next board meeting.

(The Board may decide to move into executive session pursuant to ARS §38-431.03(A)(3) and ARS §38-431.03(A)(4) for advice of counsel.)

Charles Slagle motioned to approve amending the program of instruction to include an International Baccalaureate Program. Dawn Revere seconded and the motion passed unanimously.

(The Board may decide to move into executive session pursuant to ARS §38-431.03(A)(3) and ARS §38-431.03(A)(4) for advice of counsel.)

Debra Slagle motioned to approve the Agreement for Legal Services engaging Buchalter Nemer as the firm to represent Park View School, Inc. Mary Bruhn seconded and the motion passed unanimously.

(The Board may decide to move into executive session pursuant to ARS §38-431.03(A)(3) and ARS §38-431.03(A)(4) for advice of counsel.)

Debra motioned to approve the Resolution Declaring Official Intent of Park View School, Inc. for the Reimbursement of Capital Expenditures. Mary Bruhn seconded and the motion passed unanimously.

Debra Slagle motioned to accept the Certificate of Resolution Authorizing Bond Financing on the expansion project. Dawn Revere seconded and the motion passed unanimously.

A call to public elicited no response.

Dawn Revere motioned to adjourn the meeting. Debra Slagle seconded and the meeting adjourned at 3:40 P.M.

*Some board members may attend via telephone.

Debra K. Slagle
 Approved by: _____

4/26/11
 Date: _____

April 29, 2011

State Board for Charter School Members

Re: Addition of Canyon View Preparatory High School

Dear Members:

Fain Signature Group is excited and pleased with the new addition of a college preparatory high school in Prescott Valley, AZ. The Fain Family has long been involved in the community building of Prescott Valley developing job base, new retail opportunities, negotiating the expansion of YRMC into Prescott Valley, and now working with education to bring a need to the citizens of Prescott Valley and the surrounding areas with a college preparatory high school. The programs offered in this educational institution will provide our youth with a competitive 21st Century education.

Prescott Valley is a growing progressive community. With this new addition, it will continue to remain a desirable place for families, businesses and employers to call home.

Thank you for your time.

Sincerely,

Ron Fain

RF/ms

April 29, 2011

Debra Slagle
Superintendent of Schools

Dear Mrs. Debra Slagle:

I am writing to you with the excitement of the opening of Canyon View Prep Academy in the fall of 2011. My wife and I are very excited that Westwind Community Schools is adding a 9th and 10th grade to the Prescott Valley area. My son, Caleb, has attended 8th grade at Park View Middle School and is looking forward to the brand new high school.

Caleb is a very smart and outgoing student who wants to be a doctor someday. He is looking forward to the small school environment that Canyon will provide, but the challenging curriculum that will get him prepared for college. He is excited that the IB program will be also part of the curriculum that Canyon will offer. He knows that this curriculum will be difficult, but it will prepare him for his future in a global society.

Caleb enjoys sports and other activities, but he is not the most athletic person, so Canyon will allow him to be in several activities at one time where as the other high schools in the area will make him choose one sport or activity to specialize in. He is a person who enjoys doing several different things and this smaller school will give him the opportunity to be very active through high school and finding his niche. He can test the waters of several activities like drama, baseball, and weightlifting.

We are very excited that this opportunity has come our sons' way. We are glad that Westwind Community Schools saw the need and listened to the parents in the community to provide another opportunity for our sons' education. We want Caleb to be a big fish in a little pond not a little fish in the big pond. We want him to enjoy his high school career and not get lost in the large high school. Canyon will provide him with this education and we are excited for him to start the next chapter of his life.

Thank you for making this happen for our son!

Sincerely,

Rudy Jaime

April 29, 2011

9178 E. Whipsaw Lane
Prescott Valley, AZ 86314

Westwind Academy
Attn: Debra Slagle, Superintendent
Debra.slagle@westwindacademy.org
RE: Park View Middle School / Canyon View Preparatory High School

Dear Ms. Slagle:

Please allow me a moment to share with you my excitement that the plans for the new high school, Canyon View Preparatory, have come to fruition!

My son, Nicholas Foster, has been attending Park View Middle School for just under three years. 'Just under' as opposed to simply three years as he was originally attending a traditional public school and struggling academically (to put it mildly).

Since his transfer to Park View, Nick's whole academic outlook has changed. He has become more positive about school and more confident in his academic abilities. His progress in the past few years has been nothing short of miraculous. School has ceased being the bane of his existence! In fact, Nick so enjoys his teachers that he often attends school on Fridays (his day off) for fun!

I dreaded his upcoming promotion to 9th grade as I feared his only choice was to attend a local public high school and become lost in the crowd. My fears have since been allayed since Nick will now be able to continue his academic and social growth in a positive manner at our new high school. We are so pleased that he has this opportunity that I don't really have to the words to adequately express my own relief and his excitement. I can only say that we both — parent AND student — are so very happy with this new addition to Prescott Valley.

Again, thank you so much for your persistence in getting this project off the ground. I am very sure Canyon View Preparatory High School will be a great success — so much so that I and my two younger sons are already making plans for their attendance in two and four years respectively (possibly two and three years as the younger may skip a grade).

Sincerely,

Dawn M. Foster

April 29, 2011

Dear Debra Slagle,

My name is Theresa Walton, my son, Jordan Walton has attended Parkview Middle School for the past two years. I would first like to say "THANK YOU" for your hard work in bringing Canyon View Preparatory Academy to Prescott Valley!

Having been part of the public school system for many years, the past two years have brought happiness and academic accomplishments to my son.

Because of the Westwind Community Schools the Walton family is looking forward to high school. I am excited for Jordan to have the opportunity to take dual credit classes and look forward to the IB program.

Small classes, sports, clubs, fantastic teachers, terrific administration all add up to a positive experience for the next four years. We have driven by the new school property and are watching the construction progress!

I just wanted you to know how much I really appreciate you and your staff. As a parent, I look forward to being involved at Canyon View and anticipate the education benefits that come from the programs being offered.

Sincerely,

Theresa Walton
PO Box 26681
Prescott Valley, AZ 86312-6681
(928) 848-4193
iljcmom@aol.com

Debra Slagle

From: Tina w [tinaw0914@hotmail.com]

Sent: Friday, April 29, 2011 10:08 AM

To: Debra Slagle

Subject: Canyon View

Dear Mrs. Slagle,

I am writing you to express my appreciation and excitement over Canyon View Preparatory Academy. As you know both my daughters are Park View alumni. Although neither will be attending the new school, as one is graduating and one is fully involved and excelling at BMHS, as a Park View parent I want to be sure that you know that this is the decision based on what was available upon their beginning high school. I think Prescott Valley is very blessed at Westwind Community Schools growing in our community and offering an International Baccalaureate high school. As my husband is a department head for the Town of Prescott Valley and our family is very involved in the Prescott Valley community we feel this school will be a benefit to the entire community, not just the students who attend. I anticipate this high school being among the list of reasons to locate to Prescott Valley for businesses. I look forward to seeing the completed campus and hearing about the school as it becomes a part of the community. I think the students who are beginning next year are really going to be part of something remarkable and I wish the entire staff the very best in this exciting endeavor.

Sincerely,
Tina Wadsworth

4/29/2011

April 29, 2011

Dear Mrs. Slagle,

I would like to say how happy I am about the new high school, Canyon View Preparatory Academy, coming to Prescott Valley!!! My son, Johnathan Rivera Flores-a current 8th grader, has attended Park View Middle School since 6th grade. He has made exceptional strides in his education, and I know it is because of the great teachers and academic opportunities he has had. Johnathan is very excited to be able to attend Canyon View, especially since his younger brother, Luis, will be starting at Park View next year for 6th grade.

Thank you for caring so much about our community by providing our kids with a new high school. From what I have experienced with Park View, I know Canyon View will be the best choice in education for my children.

Sincerely,

Patricia Rivera-Flores

Patricia Rivera-Flores

To whom it may concern,

I just wanted to let you know how excited I am to have my son go to the new school. He has had the best year so far but next year w/ the new school I feel he will have more fun.

Thank you,
Gloria Wilson

Debra Slagle

From: KRISTI MASSMANN [lkmassmann@q.com]

Sent: Friday, April 29, 2011 9:27 AM

To: Debra Slagle

Subject: Canyon View High School

Hi Mrs.Slagle

I just wanted to take a minute to tell you as a parent of an 8th grader & a 6th grader how excited we are for Morgan to be able to attend a brand new high school & Megan a brand new middle school. Thank you for making this possible in the Prescott Valley area. We are looking forward to great middle school and high school years for Morgan and Megan.

Thank you,
Leon and Kristi Massmann

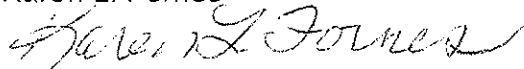
4/29/2011

To: Debra Slagle, Superintendent of Westwind Community Schools

As a parent I am really excited for the new school next year. There are a lot of new opportunities for the children. I am excited that they will be having transportation and a great sports program. It is exciting that they will be adding the high school so that my child will be able to go straight into high school from Park View. The classrooms will be smaller which will allow for more individualized attention. They will providing dual enrollment college classes and be part of the International Baccalaureate program which will provide a better education for my child.

Thank you so much.

Karen L. Fornes

A handwritten signature in cursive script, appearing to read "Karen L. Fornes".

Parent of sixth grade student at Park View Middle School

Debra Slagle

From: Carol Whatoname [cwhatoname22@yahoo.com]

Sent: Friday, April 29, 2011 10:20 AM

To: Debra Slagle

Subject: Opinion of Canyon View Preparatory

Dear Debra,

We are very excited about the new campus. The gymnasium is a big plus as well as the athletic field. The students definately need more space of their own. We feel the decision about giving the students an opportunity to play sports again is awesome. We are confident our son will continue to get the great education he is receiving now at Parkview Middle School. IWe are truly grateful the community has asked for this new campus. We are very pleased with the Parkview staff. They are very professional and we know they are making a HUGE difference and will continue to do so at Canyon View. We are pleased with the small classroom size and the one on one attention our son gets. Our minds are definately at ease knowing he is well taken care of and well educated and is safe eveyday he is in school. We are happy to say our son is very happy with the new campus as well. We would like to thank you for being a part of making this happen.

Sincerely,

Ms.Carol Whatoname & Mr. Tom Silvia

4/29/2011

Debra Slagle

From: annette thrower [athrower1@hotmail.com]

Sent: Friday, April 29, 2011 10:11 AM

To: Debra Slagle

Subject: Gratitude for parkview middle school

I would like thank parkview middle school for being such a great school for our daughter, Rebecca Thrower. She has been at parkview from the 6th grade and now she will be graduating the 8th grade with parkview. We are very happy about the new high school, we were very worried about what high school our daughter would go to now we are relived that she will still have a great principal Mrs. bruhn and a great staff. All her teachers have been wonderful with her. I would like to thank Mrs. Flores and Ms. Fitch for the great job they have done with my daughter and how they have treated her she loves this school and we are sure she will love the new high school.

With all our gratitude

Art and Annette Thrower

4/29/2011

Debra Slagle

From: Bob Tarr [bobtarr@commspeed.net]
Sent: Friday, April 29, 2011 10:58 AM
To: Debra Slagle
Subject: Fw: New Prescott Valley Charter High School

----- Original Message -----

From: Bob Tarr
To: debra.slagle@westwindacademy.org
Sent: Friday, April 29, 2011 10:55 AM
Subject: New Prescott Valley Charter High School

Miss Robin M. Tarr
Mrr & Mrs. Robert M. Tarr
11550 N. Dusty Trail
Prescott Valley, AZ 86315-9711

April 29, 2011

Mrs. Debra Slagle
Superintendent of Westwind Academy

Dear Superintendent Slagle,:

Our daughter/granddaughter, Alyssa Tarr, is currently in the seventh grade at Park View Middle School. She will advance to the eight grade shortly and continue attending Park View Middle School. We are writing this letter to inform you of how much we appreciate the staff and faculty at Park View and how much we are looking forward to Alyssa attending high school at the new facility. Alyssa is especially looking forward to attending the new high school, the ID programs, and the additional sports programs that are currently unavailable at Park View due to space constraints.

Most Sincerely,

Robert M. Tarr
Grandfather

4/29/2011

Debra Slagle

From: Leon McKendree

Sent: Friday, April 29, 2011 9:28 AM

To: Debra Slagle

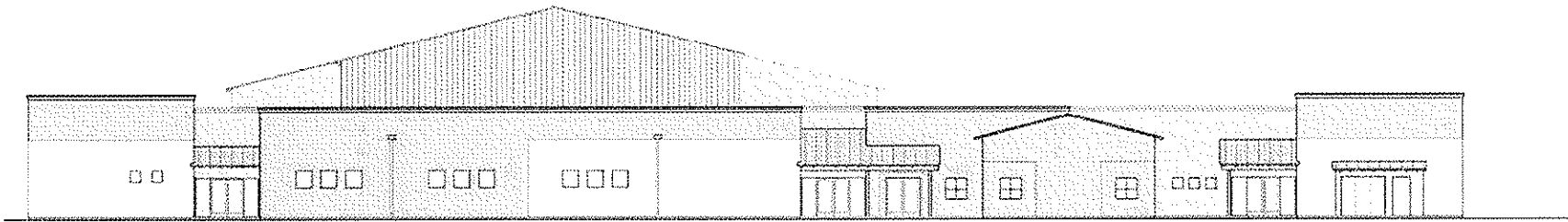
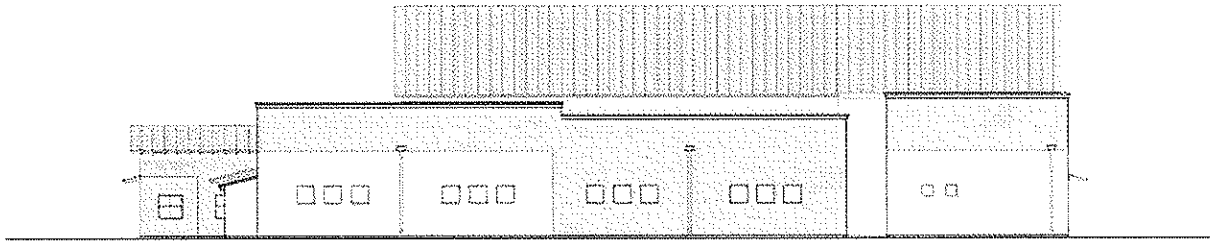
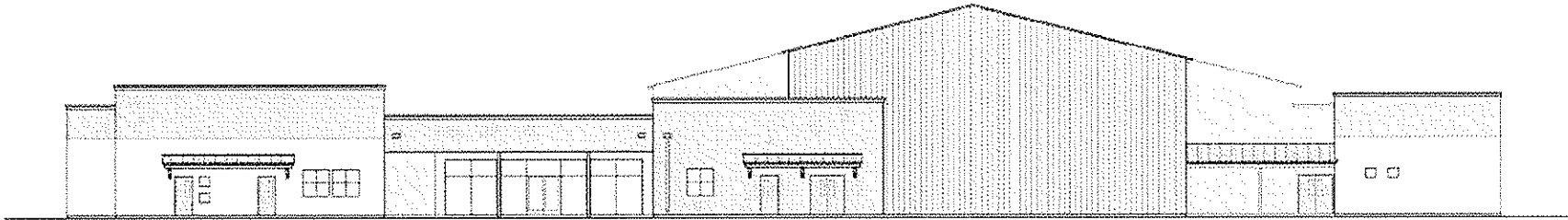
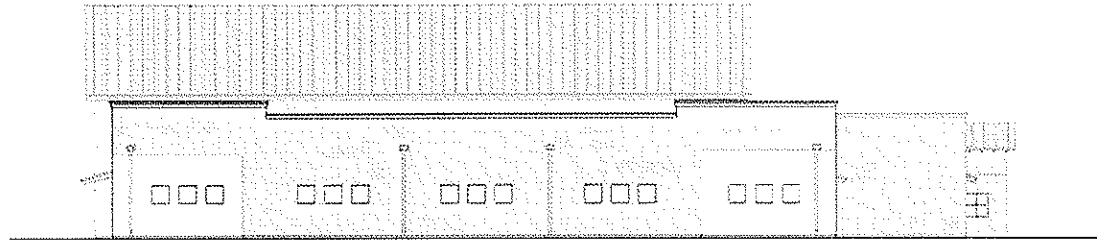
Subject: new school

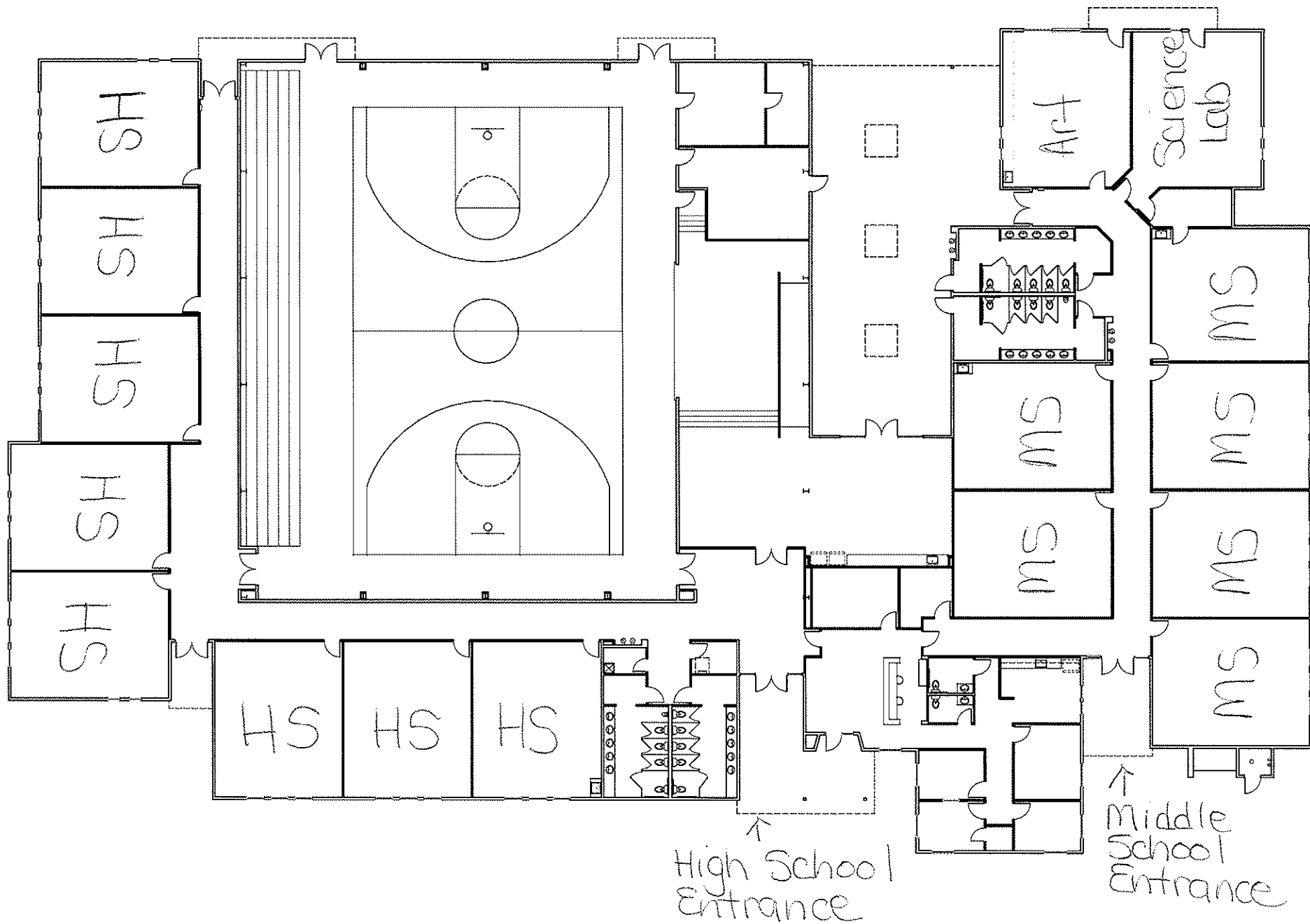
to: Mrs Debra Slagle, Superintendent of Schools

I wish to inform you that my family and I are extremely excited about the opening of Canyon Vista Prep Academy and the relocation of Park View Middle School. I have one grandson who will canyon Vista and two grandsons to attend Park View Middle School. We like what we have heard about the courses that are to be taught in each school.

Leon McKendree

4/29/2011





Westwind Prep Academy					Parkview School				
WPA Pop Reports		2009	2010	2011	Parkview Pop		2009	2010	2011
A		2%	1%	1%	A		1%	1%	1%
B		12%	17%	23%	B		1%	1%	1%
H		25%	31%	27%	H		19%	19%	10%
I		7%	6%	7%	I		1%	1%	19%
W		54%	45%	42%	W		78%	78%	88%
2008		2009	2010	2011			2009	2010	2011
9%	SPED	17%	8%	14%	SPED			5%	4%
3%	ELL	8%	1%	6%	ELL			2%	4%
60%	NCLB	81%	92%	83%	NCLB			16%	13%
0%	HOMELESS	30%	40%	25%	HOMELESS			4%	5%

Park View SGP

2010

Park View Middle School

<u>Year</u>	<u>District Name</u>	<u>Subject</u>	<u>Grade</u>	<u>State</u>	<u>Made State</u>
2010	Park View Middle School	MATH	Elementary	-7 -11	Yes
2010	Park View Middle School	READ	Elementary	9 6	Yes
2010	Glassford Hill Middle School	MATH	Elementary	-13 -11	No
2010	Glassford Hill Middle School	READ	Elementary	6 6	No
2010	Humboldt Unified District	MATH	Elementary	-11 -11	No
2010	Humboldt Unified District	READ	Elementary	2 2	No
2010	Chino Valley Unified District	MATH	Elementary	-9 -11	Yes
2010	Chino Valley Unified District	MATH	Elementary	-9 -11	Yes
2010	Prescott Valley School	MATH	Elementary	0 -11	Yes
2010	Prescott Valley School	READ	Elementary	26 3	Yes

AMCS at Anthem dba Caurus Academy

2010	AMCS at Anthem dba Caurus Academy	READ	Elementary	10 3	Yes
2010	AMCS at Anthem dba Caurus Academy	MATH	Elementary	0 -11	Yes
2010	Canyon Springs Elementary	MATH	Elementary	-10 -11	Yes
2010	Canyon Springs Elementary	READ	Elementary	3 3	No

Westwind Middle School

2010	Westwind Middle School	MATH	Elementary	5 -11	Yes
2010	Westwind Middle School	READ	Elementary	13 6	Yes
2010	Royal Palm Middle School	MATH	Elementary	-12 -12	No
2010	Royal Palm Middle School	READ	Elementary	6 4	Yes
2010	EduPreneurship Student Center (ESC) Phoer	MATH	Elementary	-21 -11	No
2010	EduPreneurship Student Center (ESC) Phoer	READ	Elementary	-8 3	No

Westwind Prep

2010	Westwind Preparatory Academy	MATH	High School	-33	-12	No
2010	Westwind Preparatory Academy	READ	High School	-15	2	No
2010	Camelback High School	MATH	High School	-4	-12	Yes
2010	Camelback High School	READ	High School	10	2	Yes
2010	E-Institute at Metro	MATH	High School	-22	-12	No
2010	E-Institute at Metro	READ	High School	2	2	Yes

Park View

AMCS at Anthem dba Caurus
Westwind Middle School
Westwind Prep

Performing Plus

Highly Performing
Performing Plus
Performing

Note: Westwind Prep has experienced a significant increase in the number of ESL students, special education and homeless students enrolled. As a result, we have had to increase our interventions to target students who are ESL, as well as those who have gaps in their learning due to societal issues. We worked with Rebecca Gau, including having her do a staff training, to address the changes in academic performance. In addition to this, we have acquired a testing program to closely monitor benchmarks for all our students, but specifically those who fall into these two categories, with instructional interventions specific to students that are tied to the benchmark results. Students who have a D or F are required to come Friday mornings for tutoring. Westwind became an International Baccalaureate Candidate school last year, and we are awaiting notification as to whether we have full status. This has allowed us access to rigorous curriculum via the IB's online curriculum center, which should also increase academic performance for all students because our IB trained teachers also teach general classes.

Note: At Park View, to improve student gains in math, we have changed math teachers, sent math teachers to training, drilled down on our analysis of AIMS results, established math benchmarks with internal assessments and then individualized interventions relative to the benchmarks. Also, we have begun to send staff to training for the International Baccalaureate Middle Years Programme, beginning with the principal and coordinator. While Park View continues to show growth and/or meet the state level for growth, as well as perform better than surrounding schools, we want to continue to improve the growth we see in students.